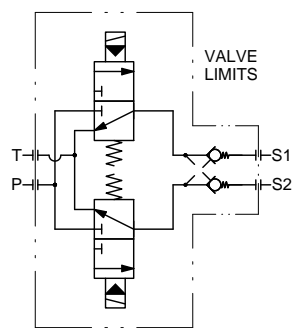


SCHEMATIC



CONNECTIONS

P = PRESSURE PORT - 1/4 NPT, 1/4 BSP(G)
S1 = SERVICE PORT - 1/4 NPT, 1/4 BSP(G)
S2 = SERVICE PORT - 1/4 NPT, 1/4 BSP(G)
T = TANK PORT - 1/4 NPT, 1/4 BSP(G)

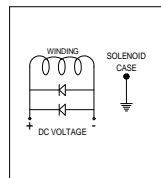
WORKING PRESSURES

MINIMUM OPERATING PRESSURE 50 BAR (725 PSI)
MAXIMUM OPERATING PRESSURE 345 BAR (5000 PSI)

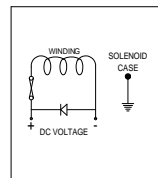
WEIGHT

10.75 Kg APPROX

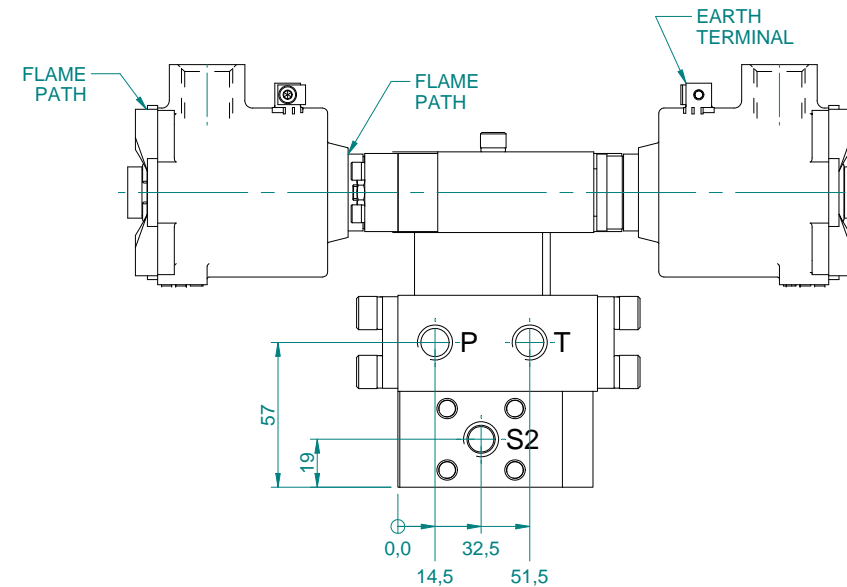
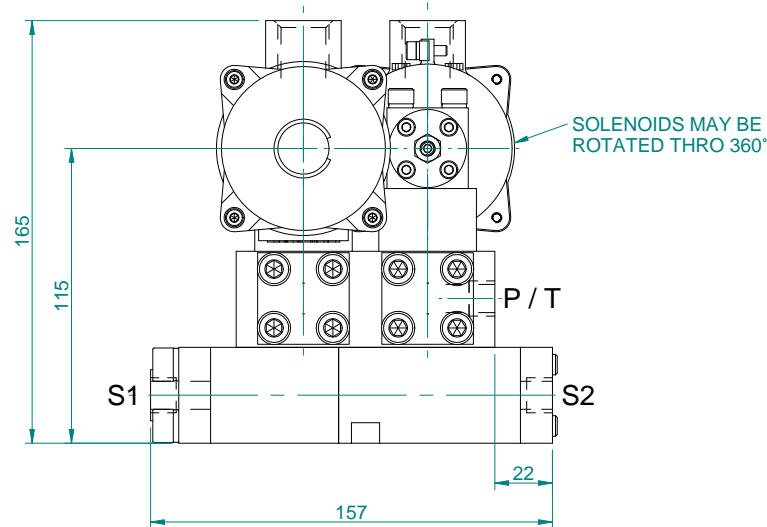
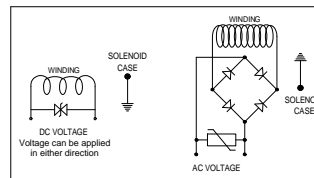
WIRING DIAGRAM - TYPE 78X



WIRING DIAGRAM - TYPE 74X



WIRING DIAGRAMS - TYPE 77X

[illegible]