



# Solenoid valve 2/2 way N.C. With pilot control

21X2KV120  
÷  
21X4KV250

## PRESENTATION:

S.V. with pilot control for interception of fluids compatible with the construction materials.

A minimum operational pressure of 0,1 bar is required.

The materials used and the tests carried out ensure maximum reliability and duration.

**USE:** Automation, Chemistry,  
Low pressure steam

**PIPES:** G 1/2 - G 1

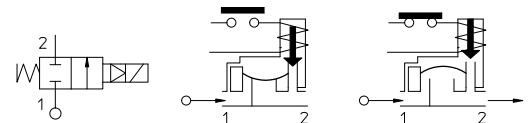
**COILS:** 8W - Ø 13  
BDA - BDS - BSA 155°C (class F)  
BDF - BDV 180°C (class H)

**.MOULDING AND BOBBIN ARE MADE BY 100% VIRGIN MATERIAL.**

Max. allowable pressure (PS) 25 bar  
Ambient temperature:  
with coil class **F** - 10°C + 60°C  
with coil class **H** - 10°C + 80°C



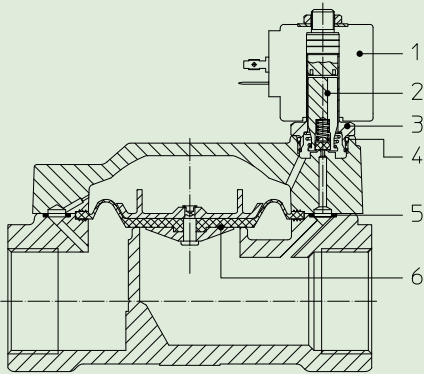
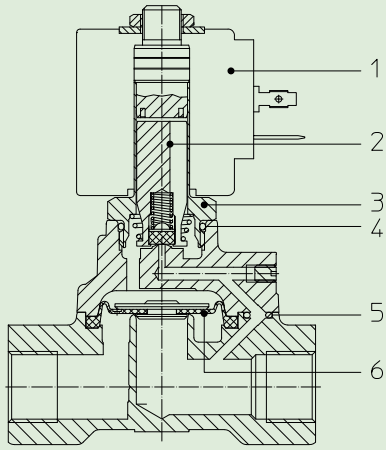
Gaskets	Temperature		Medium
	- 10°C	+140°C	
<b>V</b> =FKM (fluoroelastomer)	- 10°C	+140°C	Demineralized water, chemical products compatible with stainless steel
<b>B</b> =NBR (nitrile rubber)	- 10°C	+ 90°C	Air, water, chemical products compatible with stainless steel
<b>E</b> =EPDM (ethylene-propylene)	- 10°C	+140°C	Water, low pressure steam



For seals other than FKM replace the letter "V" with the ones corresponding to the other seals. E.I. 21X2KB120.

Pipe ISO 228/1	Code	Max viscosity		Ø mm	Kv l/mn	Power (watt)	Pressure			
		cSt	°E				min bar	M.O.P.D.		
								AC bar	DC bar	
G 1/2	21X2KV120	12	~ 2	12	35	8	0,1	20	20	
G 3/4	21X3KV190			19				130	16	16
G 1	21X4KV250			25				160		

The "ODE" reserves the right to carry out technical and aesthetic modifications without prior notification.



### MATERIALS;

<b>Body</b>	Stainless steel AISI 316
<b>Armature Tube</b>	Stainless steel AISI series 300
<b>Fixed core</b>	Stainless steel AISI series 400
<b>Plunger</b>	Stainless steel AISI series 400
<b>Phase displacement ring</b>	Gold plated copper
<b>Spring</b>	Stainless steel AISI series 300
<b>Seal</b>	Standard: V=FKM On request: B=NBR E=EPDM
<b>Orifice</b>	Stainless steel AISI 316

**On request:**  
**Connector** Pg 9 or Pg 11  
**Connector conformity** ISO 4400

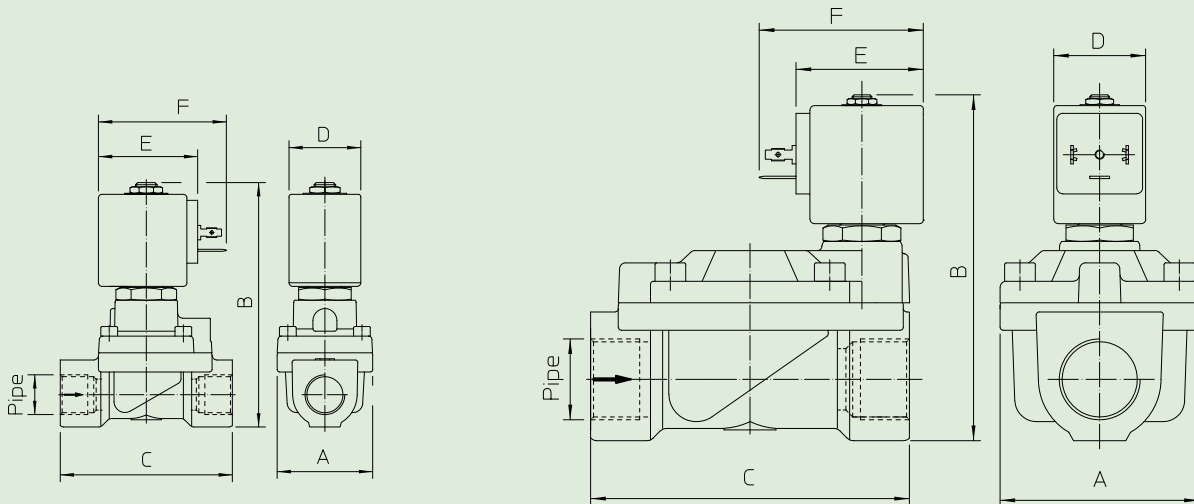
### FEATURES:

**Electrical conformity** IEC 335  
**Protection degree** IP 65 EN 60529 (DIN 40050)  
 with coil fitted by connector.

### SPARE PARTS:

- |  |  |
|--|--|
| <b>1. Coil:</b><br>See coils list  | <b>6. Complete diaphragm:</b><br>G 1/2 Code R451816/V<br>G 3/4- G 1 Code R450958/V |
| <b>2. Complete plunger:</b><br>Code R450886/V                                |  |
| <b>3. Complete armature tube without gasket:</b><br>Code R450811             | <b>KIT:</b><br>KT130KV30-H=2+3+4   |
| <b>4. Gasket O-Ring:</b><br>Code R990000/V                                   | <b>MAINTENANCE KIT:</b><br>G 1/2<br>KTG0X1KV12=2+5+6                               |
| <b>5. Gasket O-Ring:</b><br>G 1/2 Code R990003/V<br>G 3/4-G 1 Code R990002/V | G 3/4-G 1<br>KTG0X3KV19=2+5+6  |

### DIMENSIONS:



Type	Pipe ISO 228/1	A mm	B mm	C mm
21X2KV120	G 1/2	40	103	73
21X3KV190	G 3/4	65	115	104
21X4KV250	G 1			

COIL TYPE	POWER ABSORPTION			DIMENSIONS		
	W ==	Hold VA ~	Inrush VA ~	D mm	E mm	F mm
B	8	14,5	25	30	42	54



# Solenoid valve 2/2 way N.C. With pilot control

21X2KT120

÷

21X4KT250

## PRESENTATION:

S.V. with pilot control for interception of fluids compatible with the construction materials.

A minimum operational pressure of 0,5 bar is required.

The materials used and the tests undertaken ensure maximum reliability and duration.

**USE:** Hot water, Chemistry,  
Steam (180°C)

**PIPES:** G 1/2 - G 1

**COILS:** 8W - Ø 13  
BDA - BDS - BSA 155°C (class F)  
BDF - BDV 180°C (class H)

**MOULDING AND BOBBIN ARE MADE BY 100% VIRGIN MATERIAL.**

Max. allowable pressure (PS) 25 bar

Ambient temperature:

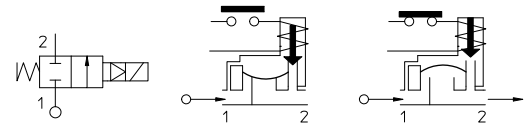
with coil class F - 10°C + 60°C

with coil class H - 10°C + 80°C



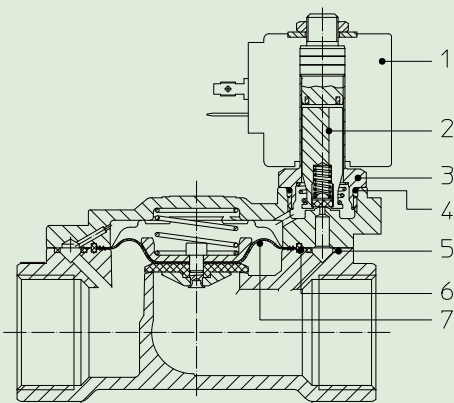
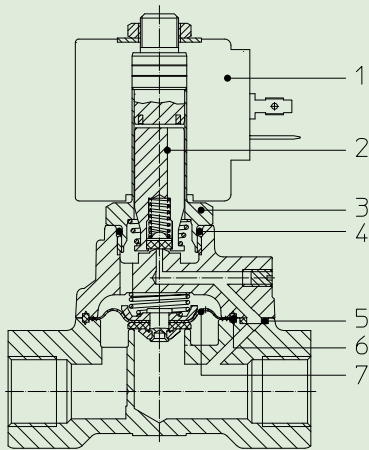
Gaskets	Temperature	Medium
T=PTFE (polytetrafluorethylen)	* + 180°C	Steam, hot water, chemical products compatible with stainless steel

\* **WARNING:** For a correct functioning of the solenoid valve the minimum temperature should not be less than + 60°C; in order to ensure a long diaphragm life, the steam filtration is recommended.



Pipe ISO 228/1	Code	Max viscosity		Ø mm	Kv l/mn	Power (watt)	Pressure		
		cSt	°E				min bar	M.O.P.D. AC bar DC bar	
G 1/2	21X2KT120	-	-	12	35	8	0,5	10	10
G 3/4	21X3KT190			19	120				
G 1	21X4KT250			25	130				

The "ODE" reserves the right to carry out technical and aesthetic modifications without prior notification.



**MATERIALS:**

- Body** Stainless steel AISI 316
- Armature tube** Stainless steel AISI series 300
- Fixed core** Stainless steel AISI series 400
- Plunger** Stainless steel AISI series 400
- Phase displacement ring** Gold plated copper
- Spring** Stainless steel AISI series 300
- Seal** T=PTFE
- Orifice** Stainless steel AISI 316

**On request:**

- Connector** Pg 9 or Pg 11
- Connector conformity** ISO 4400

**FEATURES:**

- Electrical conformity** IEC 335
- Protection degree** IP 65 EN 60529 (DIN 40050) with coil fitted by connector.

**SPARE PARTS:**

- 1. Coil:** G 3/4-G 1 Code R450895  
See coils list
- 2. Complete plunger:** G 1/2 Code R450950  
Code R450886/T G 3/4- G 1 Code R450954
- 3. Complete armature tube without gasket:** Code R450811
- 4. Gasket O-Ring:** Code R990000/T
- 5. Gasket:** G 1/2 Code R450858  
G 3/4-G 1 Code R450894
- 6. Sealing ring:** G 1/2 Code R450859
- 7. Complete diaphragm:** G 1/2 Code R450950  
G 3/4- G 1 Code R450954

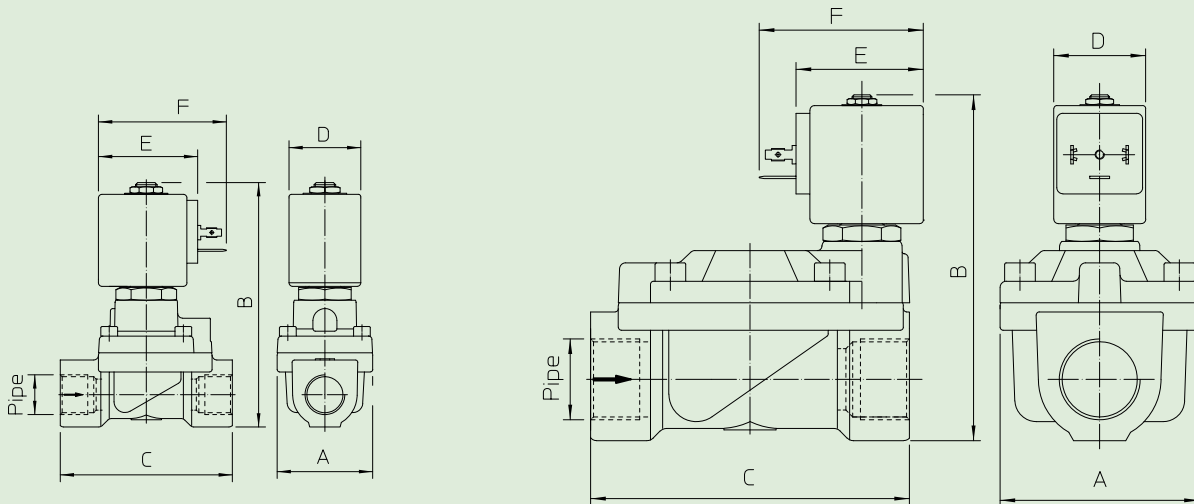
**KIT:**

KT130KT30-H=2+3+4

**MAINTENANCE KIT:**

G 1/2  
KTG0X1KT12=2+5+6+7  
G 3/4- G 1  
KTG0X3KT19=2+5+6+7

**DIMENSIONS:**



Type	Pipe ISO 228/1	A mm	B mm	C mm
21X2KT120	G 1/2	40	103	73
21X3KT190	G 3/4	65	115	104
21X4KT250	G 1			

COIL TYPE	POWER ABSORPTION			DIMENSIONS		
	W ==	Hold VA ~	Inrush VA ~	D mm	E mm	F mm
B	8	14,5	25	30	42	54



# Solenoid valve 2/2 way N.C. With pilot control

21XN4K1V120

21XN6K1V250

## PRESENTATION

S.V. with pilot control for interception of fluids compatible with the construction materials.

A minimum operational pressure of 0,1 bar is required.

The materials used and the tests carried out ensure maximum reliability and duration.

**USE:** Automation, Chemistry,  
Low pressure steam

**PIPES:** 1/2 NPT - 1 NPT

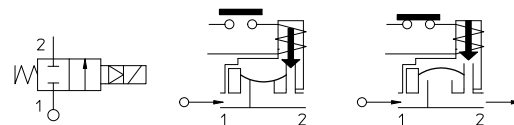
**COILS:** 8W - Ø 13  
BDA -BDS - BSA 155°C (class F)  
BDP 160°C (high temperature)  
BDF - BDV 180°C (class H)

**MOULDING AND BOBBIN ARE MADE BY 100% VIRGIN MATERIAL.**

Max. allowable pressure (PS)	25 bar
Environment temperature:	
with coil class <b>F</b> or high temperature	- 10°C + 60°C
with coil class <b>H</b>	- 10°C + 80°C



Gaskets	Temperature		Medium
	- 10°C	+140°C	
V=FKM (fluoroelastomer)	- 10°C	+140°C	Demineralized water, chemical products compatible with stainless steel

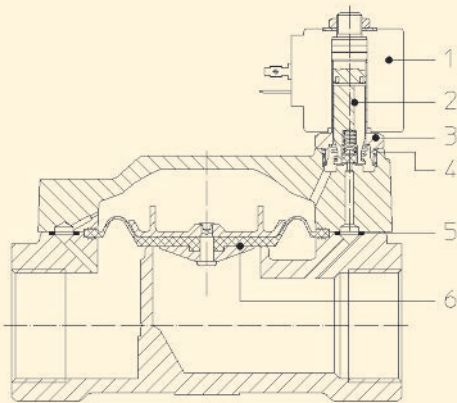
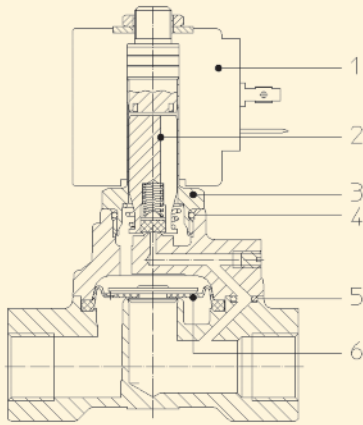


Pipe ANSI/ASME BI.20.1	Code	Max viscosity		Ø mm	Kv l/mn	Power (watt)	Pressure		
		cSt	°E				min bar	M.O.P.D.	
								AC bar	DC bar
1/2 NPT	21XN4K1V120	12	~ 2	12	35	0,1	20	20	
1 NPT	21XN6K1V250			25	160		16	16	

## Note

Available on request and with minimum quantities.

The "ODE" reserves the right to carry out technical and aesthetic modifications without prior notification.



### MATERIALS:

<b>Body</b>	Stainless steel AISI 316
<b>Armature Tube</b>	Stainless steel AISI series 300
<b>Fixed core</b>	Stainless steel AISI series 400
<b>Plunger</b>	Stainless steel AISI series 400
<b>Phase displacement ring</b>	Gold plated copper
<b>Spring</b>	Stainless steel AISI series 300
<b>Seal</b>	V=FKM

**Orifice** Stainless steel AISI 316

**On request:**  
**Connector** Pg 9 or Pg 11  
**Connector conformity** ISO 4400

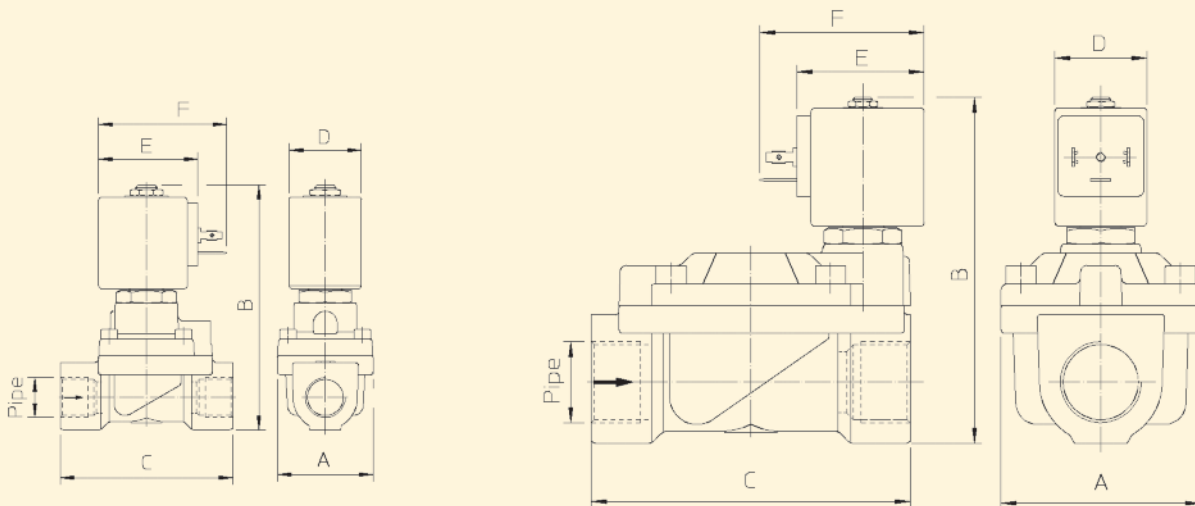
### FEATURES:

**Electrical conformity** IEC 335  
**Protection degree** IP 65 EN 60529 (DIN 40050)  
 with coil fitted by connector.

### SPARE PARTS:

- |  |                |                               |
|--|----------------|-------------------------------|
| <b>1. Coil:</b>                                  |                | <b>6. Complete diaphragm:</b> |
| See coils list                                   | 1/2 NPT        | Code R451816/V                |
| <b>2. Complete plunger:</b>                      | 1 NPT          | Code R450958/V                |
| Code R450886/V                                   |                |                               |
| <b>3. Complete armature tube without gasket:</b> |                | <b>KIT:</b>                   |
| Code R450811                                     |                | KT130KV30-H=2+3+4             |
| <b>4. Gasket O-Ring:</b>                         |                | <b>MAINTENANCE KIT:</b>       |
| Code R990000/V                                   | 1/2 NPT        |                               |
| <b>5. Gasket O-Ring:</b>                         |                | KTG0X1KV12=2+5+6              |
| 1/2 NPT  | Code R990003/V | 1 NPT                         |
| 1 NPT  | Code R990002/V | KTG0X3KV19=2+5+6              |

### DIMENSIONS:



Type	Pipe	A mm	B mm	C mm
21XN4K1V120	1/2 NPT	40	103	72
21XN6K1V250	1 NPT	65	115	104

COIL	POWER ABSORPTION		TYPE	DIMENSIONS		
	W	Inrush VA ~		Hold VA ~	D mm	E mm
8 W	25	14,5	B	30	42	54