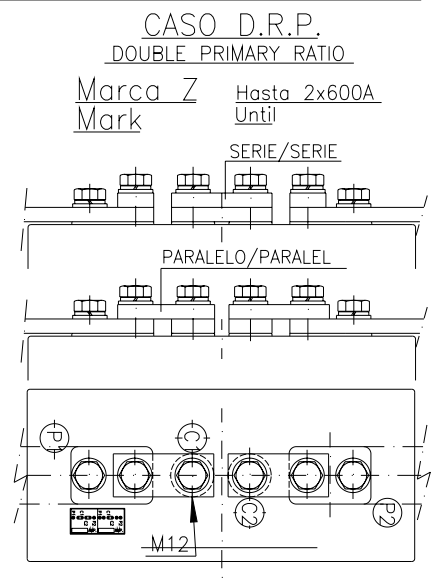
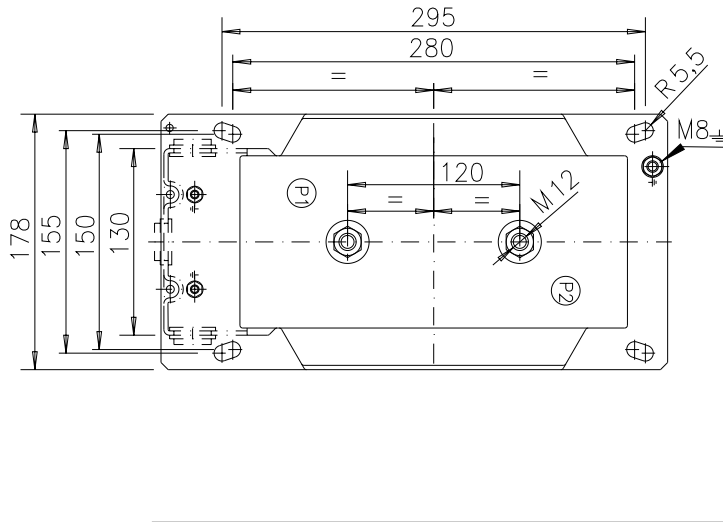


CASO S.R.P.
SINGLE PRIMARY RATIO

Hasta 600A
Until

Marca A
Mark

Bornes BT M6 (M?x.6 bornes)
Secondary terminals M6
(Max.6 terminals)



CASO D.R.P.
DOUBLE PRIMARY RATIO

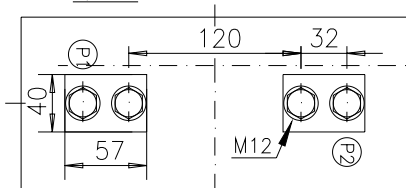
Marca Z Hasta 2x600A
Mark Until

SERIE/SERIE

PARALELO/PARALELO

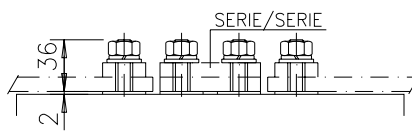
CASO S.R.P.
SINGLE PRIMARY RATIO

Marca B Hasta 1500A
Mark Until



CASO D.R.P.
DOUBLE PRIMARY RATIO

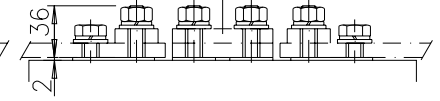
Marca D Hasta 2x600A
Mark Until



CASO D.R.P.
DOUBLE PRIMARY RATIO

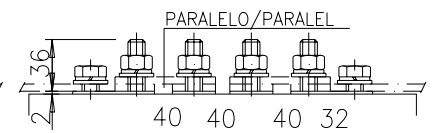
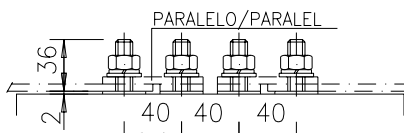
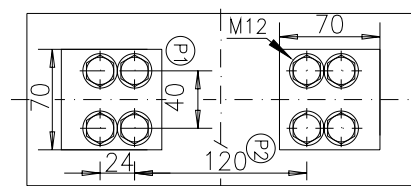
Marca E Hasta 2x600A
Mark Until

SERIE/SERIE



CASO S.R.P.
SINGLE PRIMARY RATIO

Marca C Hasta 2000A
Mark Until



Peso aprox./ Approx.weight 27 Kgs



arteche

Dimensiones aproximadas en mm
Approximate dimensions in mm

TRANSFO DE INTENSIDAD
CURRENT TRANSFORMER

ACF-12

Fecha/Date
7-3-13

Comprobado/Checked
N.A

N? Plano
Drawing N?

4282292