

Directional valves ▶ Electrically operated

5/2-directional valve, Series CD07

- ▶ Qn = 1200 l/min ▶ Pilot valve width: 30 mm ▶ pipe connection ▶ Compressed air connection output: G 1/4
- ▶ Electr. connection: Plug, EN 175301-803, form A ▶ Manual override: with detent, without ▶ single solenoid



00134143

Version	Spool valve, zero overlap
Sealing principle	Soft sealing
Mounting on manifold strip	P-strip, PRS strip
Working pressure min./max.	See table below
Control pressure min./max.	3 bar / 10 bar
Ambient temperature min./max.	See table below
Medium temperature min./max.	See table below
Medium	Compressed air
Max. particle size	50 µm
Oil content of compressed air	0 mg/m³ - 1 mg/m³
Nominal flow Qn	1200 l/min
Nominal flow 1 ▶ 2	1200 l/min
Nominal flow 2 ▶ 3	1200 l/min
Compressed air connection	according to ISO 228-1 with directional pilot air exhaust EN 175301-803:2006
Connector standard	See table below
Protection class with connection	Protected against polarity reversal
Compatibility index	See table below
Duty cycle	100 %
Weight	See table below
Materials:	
Housing	Die cast zinc; Polyamide, fiber-glass reinforced
Seals	Acrylonitrile Butadiene Rubber

Technical Remarks

- The min. control pressure must be adhered to, since otherwise faulty switching and valve failure may result!
- The pressure dew point must be at least 15 °C under ambient and medium temperature and may not exceed 3 °C.
- The oil content of compressed air must remain constant during the life cycle.
- Use only the approved oils from AVENTICS, see chapter „Technical information“.
- ATEX optional: ATEX version can be produced by combining the basic valve without coil with an ATEX coil. ATEX ID: see ATEX coils catalog page.

Operational voltage			Voltage tolerance			Power consumption	Switch-on power		Holding power	
DC	AC 50 Hz	AC 60 Hz	DC	AC 50 Hz	AC 60 Hz	DC	AC 50 Hz	AC 60 Hz	AC 50 Hz	AC 60 Hz
						W	VA	VA	VA	VA
24 V	-	-	-10% / +15%	-	-	2.1	-	-	-	-
-	230 V	230 V	-	-20% / +10%	-10% / +20%	-	6.9	5.8	4.8	4.1
24 V	-	-	-10% / +10%	-	-	2.1	-	-	-	-
96 V	-	-	-30% / +30%	-	-	5.8	-	-	-	-
-	110 V	110 V	-	-20% / +10%	-10% / +20%	-	6.8	5.7	4.3	3.3

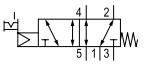

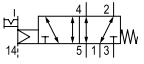

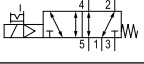
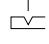
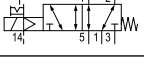
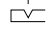

	MO	Compressed air connection					Operating voltage			Part No.
		Input	Output	Exhaust	Pilot Input	Pilot Exhaust	DC	AC 50 Hz	AC 60 Hz	
		G 1/4	G 1/4	G 1/4	-	-	24 V	-	-	5776070220
		-	230 V	230 V	-	-	-	6.9	5.8	4.8
		G 1/4	G 1/4	G 1/4	G 1/8	M5	24 V	-	-	5776080220
		-	230 V	230 V	-	-	-	6.8	5.7	4.3

Part numbers marked in bold are available from the central warehouse in Germany, see the shopping basket for more detailed information

Directional valves ► Electrically operated

5/2-directional valve, Series CD07

► Qn = 1200 l/min ► Pilot valve width: 30 mm ► pipe connection ► Compressed air connection output: G 1/4
 ► Electr. connection: Plug, EN 175301-803, form A ► Manual override: with detent, without ► single solenoid

	MO	Compressed air connection					Operating voltage			Part No.
		Input	Output	Exhaust	Pilot Input	Pilot Exhaust	DC	AC 50 Hz	AC 60 Hz	
		G 1/4	G 1/4	G 1/4	-	-	-	-	-	5776075302
		G 1/4	G 1/4	G 1/4	G 1/8	M5	-	-	-	5776085302
		G 1/4	G 1/4	G 1/4	-	-	24 V 96 V	-	-	R412004093 5776070360
		G 1/4	G 1/4	G 1/4	G 1/8	M5	-	110 V	110 V	5776085270
	-	G 1/4	G 1/4	G 1/4	-	-	24 V	-	-	5776980220

Part No.	Power consumption		Hold- ing power	Hold- ing power	Switch- on power	Switch- on power	Working pressure min./max.	Ambient temperature min./max.	Medium temperature min./max.	Switch-on time
	DC	AC 50 Hz	AC 60 Hz	AC 50 Hz	AC 60 Hz					
	[W]	[VA]	[VA]	[VA]	[VA]	[bar]	[°C]	[°C]	[ms]	
5776070220	2.1	-	-	-	-	3 / 10	-25°C / +50°C	-25°C / +50°C	25	
5776075280	-	4.8	4.1	6.9	5.8	-0.95 / 10	-25°C / +50°C	-25°C / +50°C	25	
5776080220	2.1	-	-	-	-	3 / 10	-10°C / +50°C	-10°C / +50°C	25	
5776085280	-	4.8	4.1	6.9	5.8	-0.95 / 10	-25°C / +50°C	-25°C / +50°C	25	
5776075302	-	-	-	-	-	3 / 10	-25°C / +50°C	-25°C / +50°C	-	
5776085302	-	-	-	-	-	-0.95 / 10	-25°C / +50°C	-25°C / +50°C	-	
R412004093	2.1	-	-	-	-	3 / 10	-10°C / +50°C	-10°C / +50°C	25	
5776070360	5.8	-	-	-	-	-0.95 / 10	-25°C / +50°C	-25°C / +50°C	25	
5776085270	-	4.3	3.3	6.8	5.7	-0.95 / 10	-25°C / +50°C	-25°C / +50°C	25	
5776980220	2.1	-	-	-	-	3 / 10	-25°C / +50°C	-25°C / +50°C	25	

Part No.	Switch-off time	Compatibility index	Protection class	Weight	Note
	[ms]			[kg]	
5776070220	45	13, 14	IP65	0.57	2)
5776075280	45	13, 14	IP65	0.57	3)
5776080220	45	13, 14	IP65	0.57	3)
5776085280	45	13, 14	IP65	0.57	3)
5776075302	-	13, 14	-	-	2); 4); 5)
5776085302	-	13, 14	-	-	3); 4); 5)
R412004093	45	13, 14	IP65	0.57	2); 6)
5776070360	45	14	IP65	0.57	2)
5776085270	45	14	IP65	0.57	3)
5776980220	45	14	IP65	0.57	2)

MO = Manual override

1) Nickel-plated armature guide (only suitable for DC variant), i.e. the base must not be equipped with AC coils.

2) Pilot: internal

3) Pilot: external

4) Basic valve without coil

5) ATEX optional

6) ATEX certified

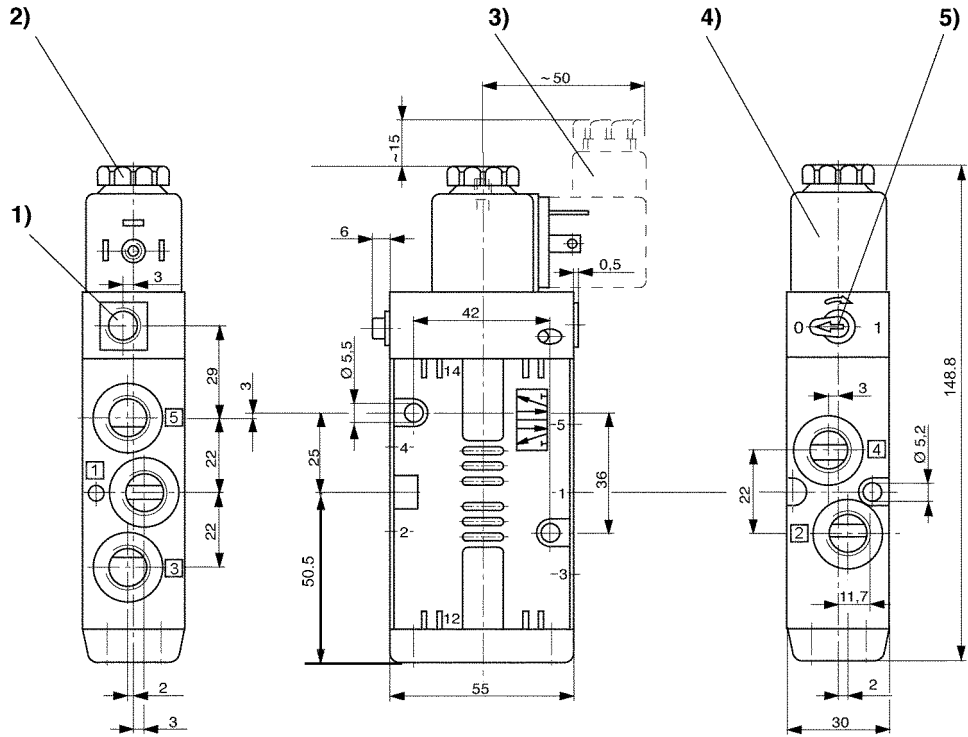
Nominal flow Qn at 6 bar and Δp = 1 bar

Directional valves ▶ Electrically operated

5/2-directional valve, Series CD07

- ▶ Qn = 1200 l/min ▶ Pilot valve width: 30 mm ▶ pipe connection ▶ Compressed air connection output: G 1/4
- ▶ Electr. connection: Plug, EN 175301-803, form A ▶ Manual override: with detent, without ▶ single solenoid

Dimensions



D577_608

- 1) only with separate pilot control G 1/8 2) after removal of cap M 5 internal thread M5 3) el. connector can
- 4) coil can be plugged at 45° intervals 5) manual override