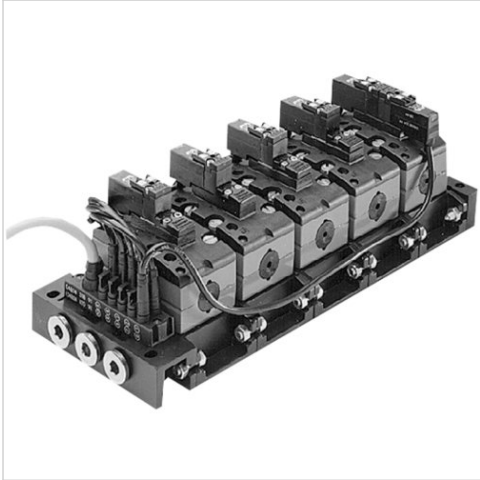


Valve system, Series 581

- Configurable valve systems



Blocking principle	Single base plate principle
Standards	ISO 5599-1, ISO 1
Working pressure min./max.	-0,95 ... 10 bar
Ambient temperature min./max.	-10 ... 50 °C
Medium	Compressed air
Max. particle size	50 µm
Oil content of compressed air	0 ... 5 mg/m ³
Nominal flow Qn	1100 l/min
Number of valve positions max.	10
Protection class with connection	IP65 IP67
Voltage tolerance DC	-10% / +10%

Overview of variants

	Version	You have the following options:
	15 mm pilot valve width	Compressed air connection output Base plate ISO 5599-1 manual override: without detent
	15 mm pilot valve width	Compressed air connection output Base plate ISO 5599-1 Electrical connection Single plug-in wiring electronic connection module and multiple cable manual override: without detent
	22 mm pilot valve width	Compressed air connection output Base plate ISO 5599-1 Electrical connection Single plug-in wiring Valve plug connector form B industry Manual override: with detent
	30 mm CNOMO pilot valve width	Compressed air connection output Base plate ISO 5599-1 Manual override: with detent
	30 mm CNOMO pilot valve width	Compressed air connection output Base plate ISO 5599-1 manual override: without detent
	Pneumatically operated	Compressed air connection output Base plate ISO 5599-1

Technical information

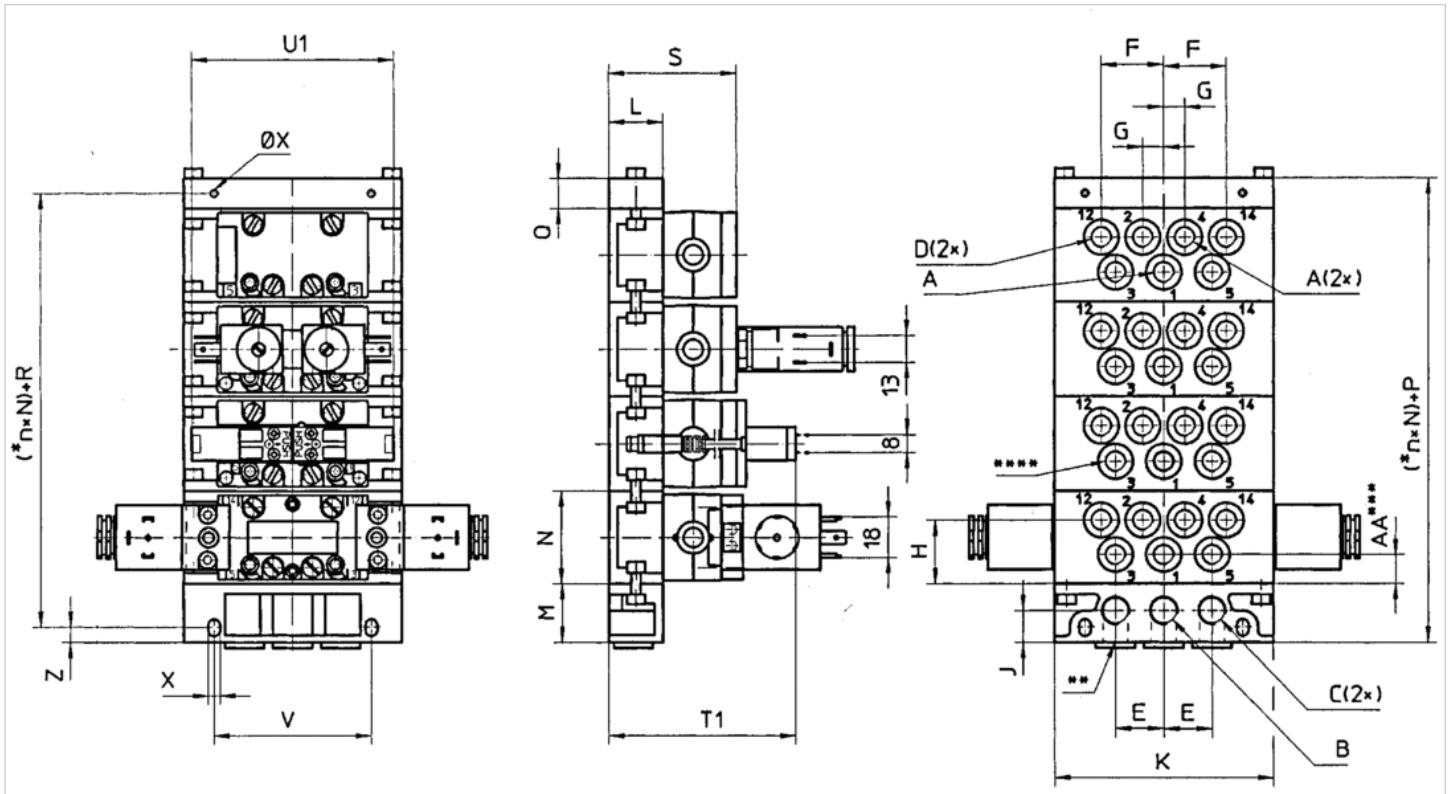
The min. control pressure must be adhered to, since otherwise faulty switching and valve failure may result!
 The pressure dew point must be at least 15 °C under ambient and medium temperature and may not exceed 3 °C .
 The oil content of compressed air must remain constant during the life cycle.
 Use only the approved oils from AVENTICS. Further information can be found in the “Technical information” document (available in the MediaCentre).

Technical information

Material	
Plug box	Polyamide, fiber-glass reinforced
Seal	Acrylonitrile butadiene rubber

Dimensions

15 mm pilot valve width electronic connection module and multiple cable all ports on bottom



Base plate ISO 5599-1

* n = number of subbases.** Alternative port openings, closed with plugs.*** Only on subbases with separate intake. **** Subbase 5801680000 can also be connected to port 3 and 5.

An example configuration is illustrated. The delivered product may thus deviate from the illustration.

Dimensions

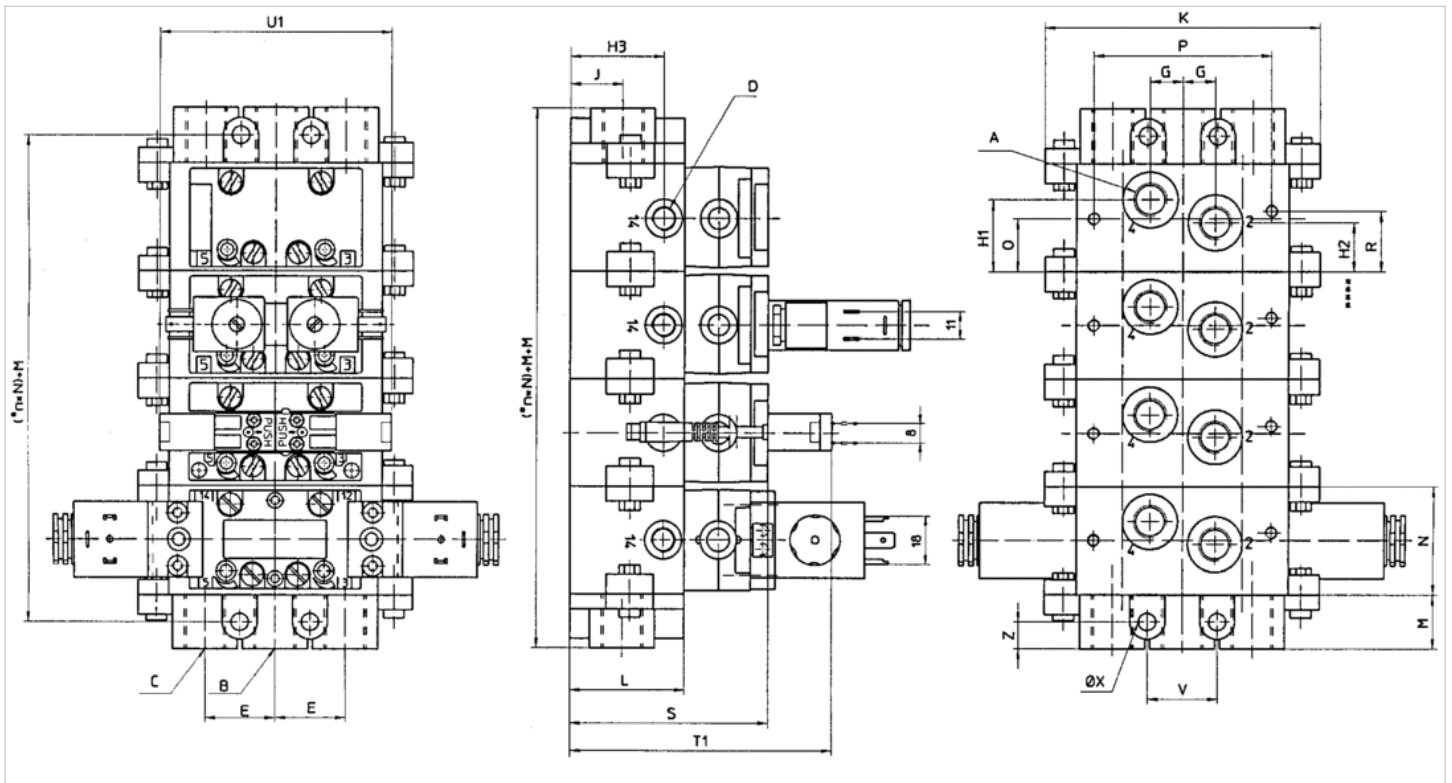
A	G 1/8	G 1/4	Ø 6	Ø 8
B	G 1/4	G 3/8	G 1/4	G 3/8
C	G 1/4	G 3/8	G 1/4	G 3/8
D	G 1/8	G 1/8	Ø 4	Ø 6
E	22	27	22	27

A	G 1/8	G 1/4	Ø 6	Ø 8
F	28.5	40	28.5	40
G	9.5	12.5	9.5	12.5
H	29.5	26.5	29.5	26.5
J	14.5	20	14.5	20
K	100	122	100	122
L	25	30	25	30
M	27	34	27	34
N	43	43	43	43
P (=M+Q)	41	49	41	49
Q	14	15	14	15
R (=Q/2+M-Z)	27.5	34	27.5	34
S	60	65	60	65
V	72	94	72	94
X	5.4	6.4	5.4	6.4
Z	7	8	7	8
AA	8	10	-	-
T1	85	92	85	92
U1	93	93	93	93

A = ports 2 and 4 in the intermediate plate ↔ B = port 1 in the supply plate ↔ C = ports 3 and 5 in the supply plate ↔ D = ports 12 and 14 in the intermediate plate

Dimensions

Dimensions ports 2 and 4 on bottom Ports 12 and 14 on side



* n = Number of subbases

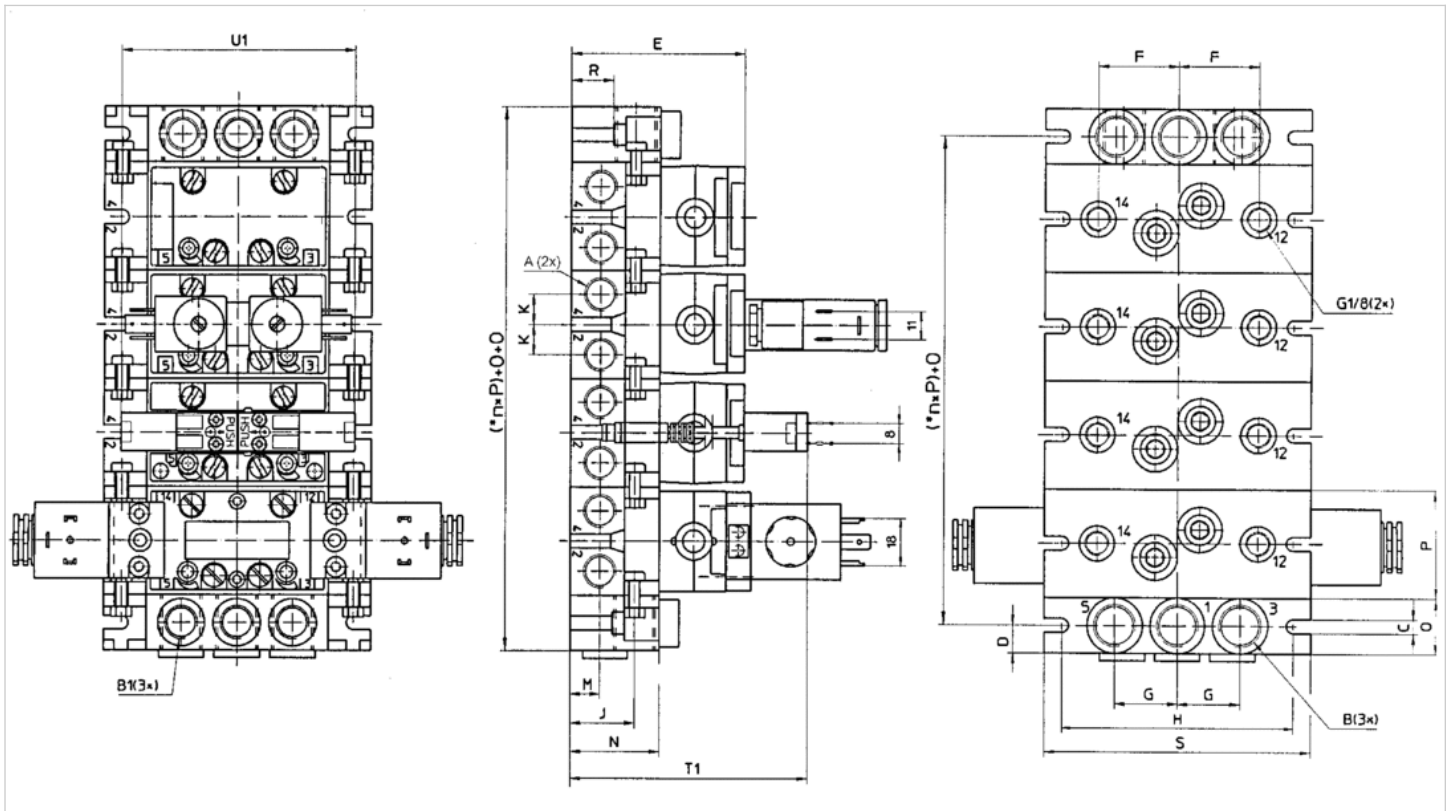
An example configuration is illustrated. The delivered product may thus deviate from the illustration.

Dimensions

A	G 1/4
B	G 3/8
C	G 3/8
D	G 1/8
E	28
G	13
H1	29
H2	20
H3	39.5
J	22
K	110
L	46
M	22
N	43
P	71
Q	21.5
R	24.5
S	86
V	28
X	7
Z	11
T1	107
U1	93

Dimensions

Dimensions ports 2 and 4 on side ports 12 and 14 on bottom



* n = Number of subbases

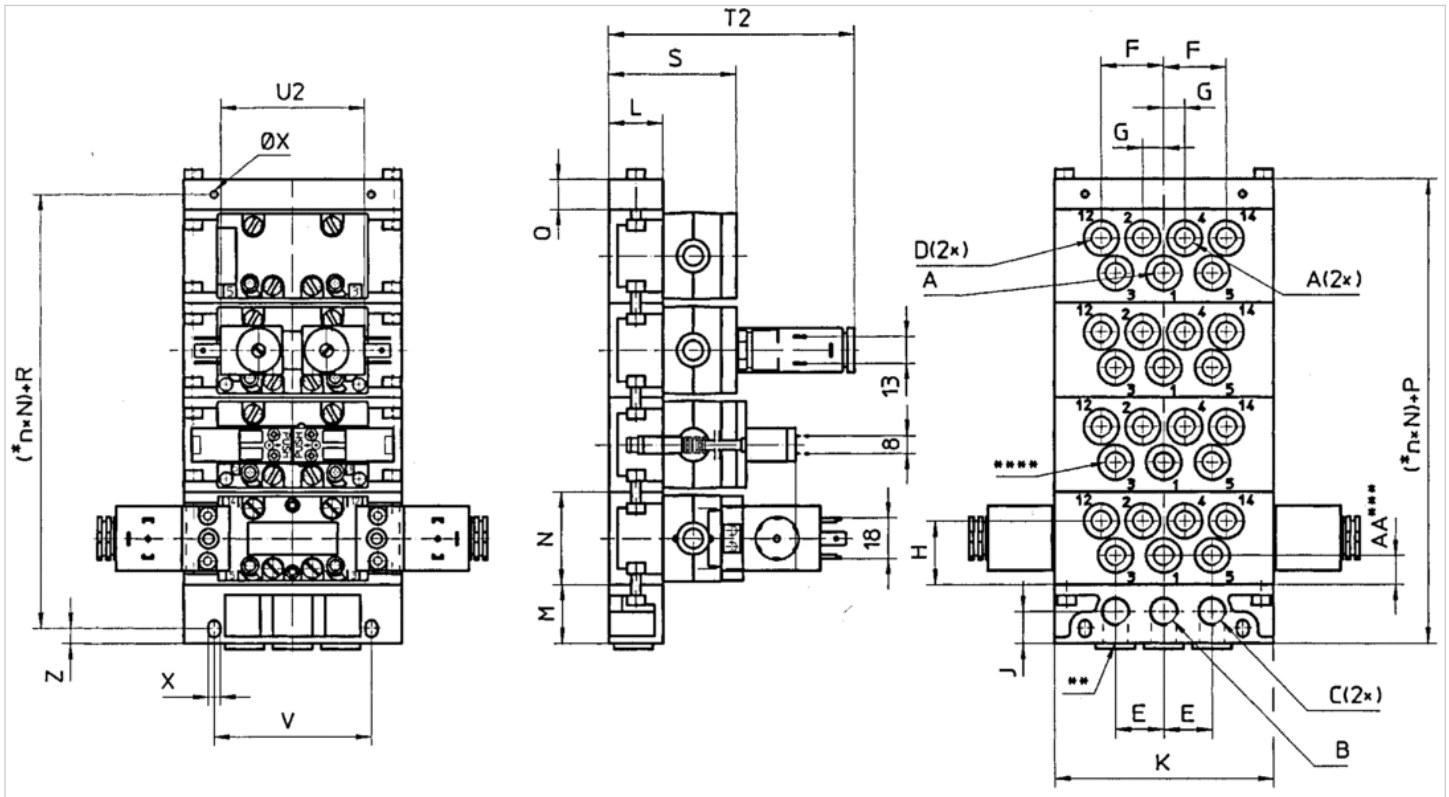
An example configuration is illustrated. The delivered product may thus deviate from the illustration.

Dimensions

A	G 1/4
B	G 3/8
B1	G 1/4
C	5.5
D	11
E	71
F	32
G	22
H	92
J	24
R	17
K	12
M	12
N	36
O	22
P	43
S	106
T1	96
U1	93

Dimensions

22 mm pilot valve width Valve plug connector without standard (form B industry) all ports on



* n = number of subbases. ** Alternative port openings, closed with plugs. *** Only on subbases with separate intake. **** Subbase 5801680000 can also be connected to port 3 and 5.

An example configuration is illustrated. The delivered product may thus deviate from the illustration.

Dimensions

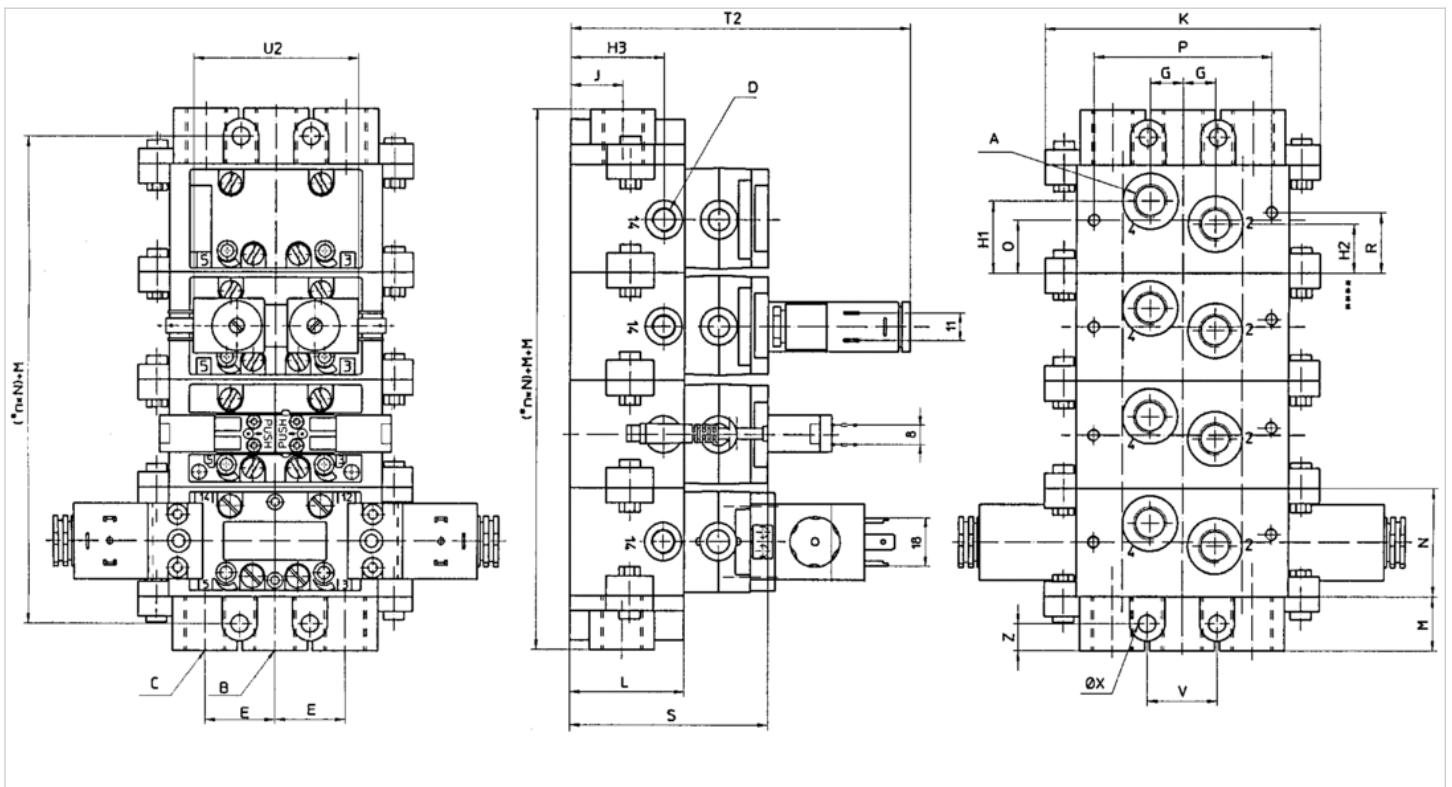
A	G 1/8	G 1/4	Ø 6	Ø 8
B	G 1/4	G 3/8	G 1/4	G 3/8
C	G 1/4	G 3/8	G 1/4	G 3/8
D	G 1/8	G 1/8	Ø 4	Ø 6
E	22	27	22	27
F	28.5	40	28.5	40
G	9.5	12.5	9.5	12.5
H	29.5	26.5	29.5	26.5
J	14.5	20	14.5	20
K	100	122	100	122
L	25	30	25	30
M	27	34	27	34
N	43	43	43	43
P (=M+Q)	41	49	41	49
Q	14	15	14	15
R (=Q/2+M-Z)	27.5	34	27.5	34
S	60	65	60	65
V	72	94	72	94
X	5.4	6.4	5.4	6.4

A	G 1/8	G 1/4	Ø 6	Ø 8
Z	7	8	7	8
AA	8	10	-	-
T2	113	119	113	119
U2	70	70	70	70

A = ports 2 and 4 in the intermediate plate ↔ B = port 1 in the supply plate ↔ C = ports 3 and 5 in the supply plate ↔ D = ports 12 and 14 in the intermediate plate

Dimensions

Dimensions ports 2 and 4 on bottom Ports 12 and 14 on side



* n = Number of subbases

An example configuration is illustrated. The delivered product may thus deviate from the illustration.

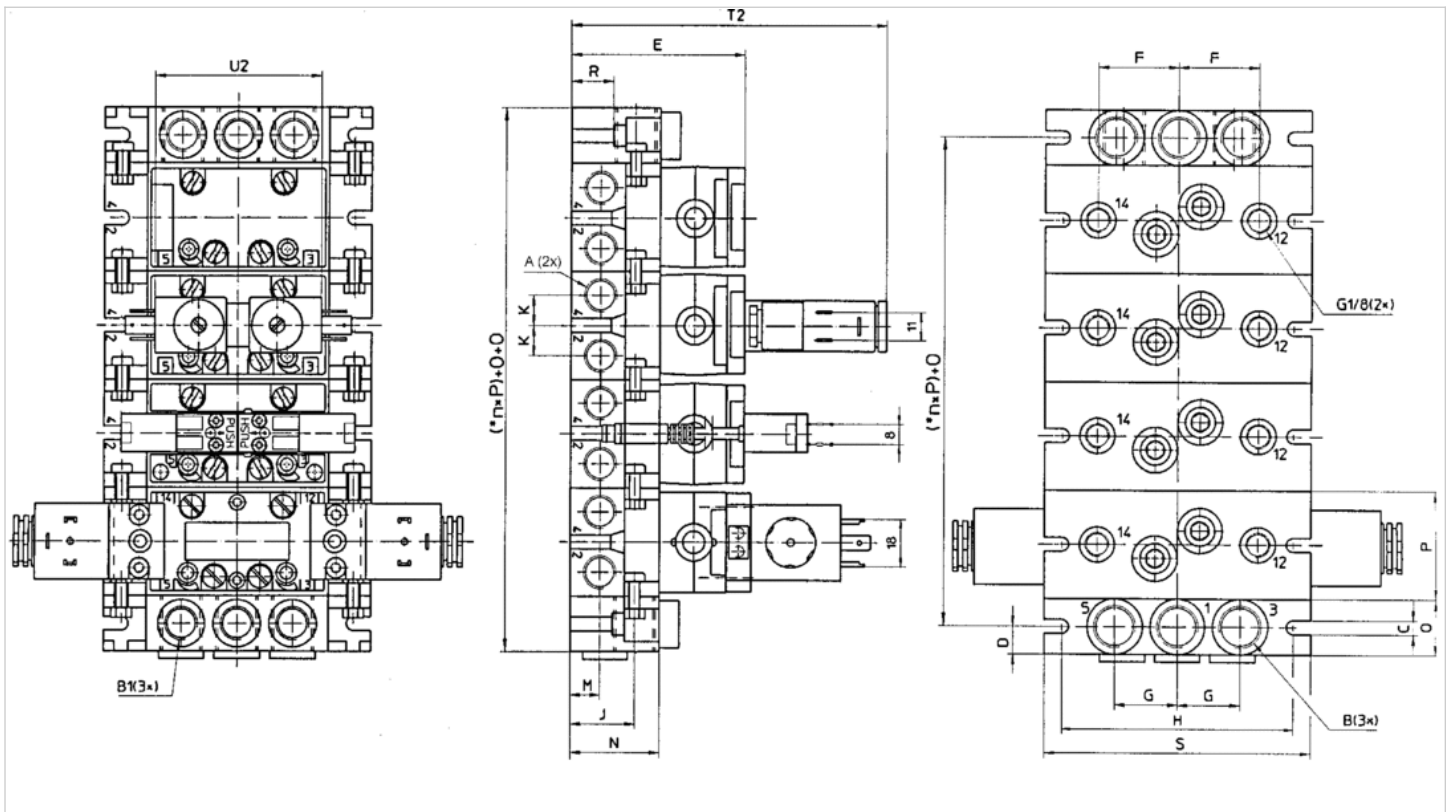
Dimensions

	G 1/4
A	G 1/4
B	G 3/8
C	G 3/8
D	G 1/8
E	28
G	13
H1	29
H2	20
H3	39.5
J	22
K	110
L	46

A	G 1/4
M	22
N	43
P	71
Q	21.5
R	24.5
S	81
V	28
X	7
Z	11
T2	134
U2	68

Dimensions

Dimensions ports 2 and 4 on side ports 12 and 14 on bottom



* n = Number of subbases

An example configuration is illustrated. The delivered product may thus deviate from the illustration.

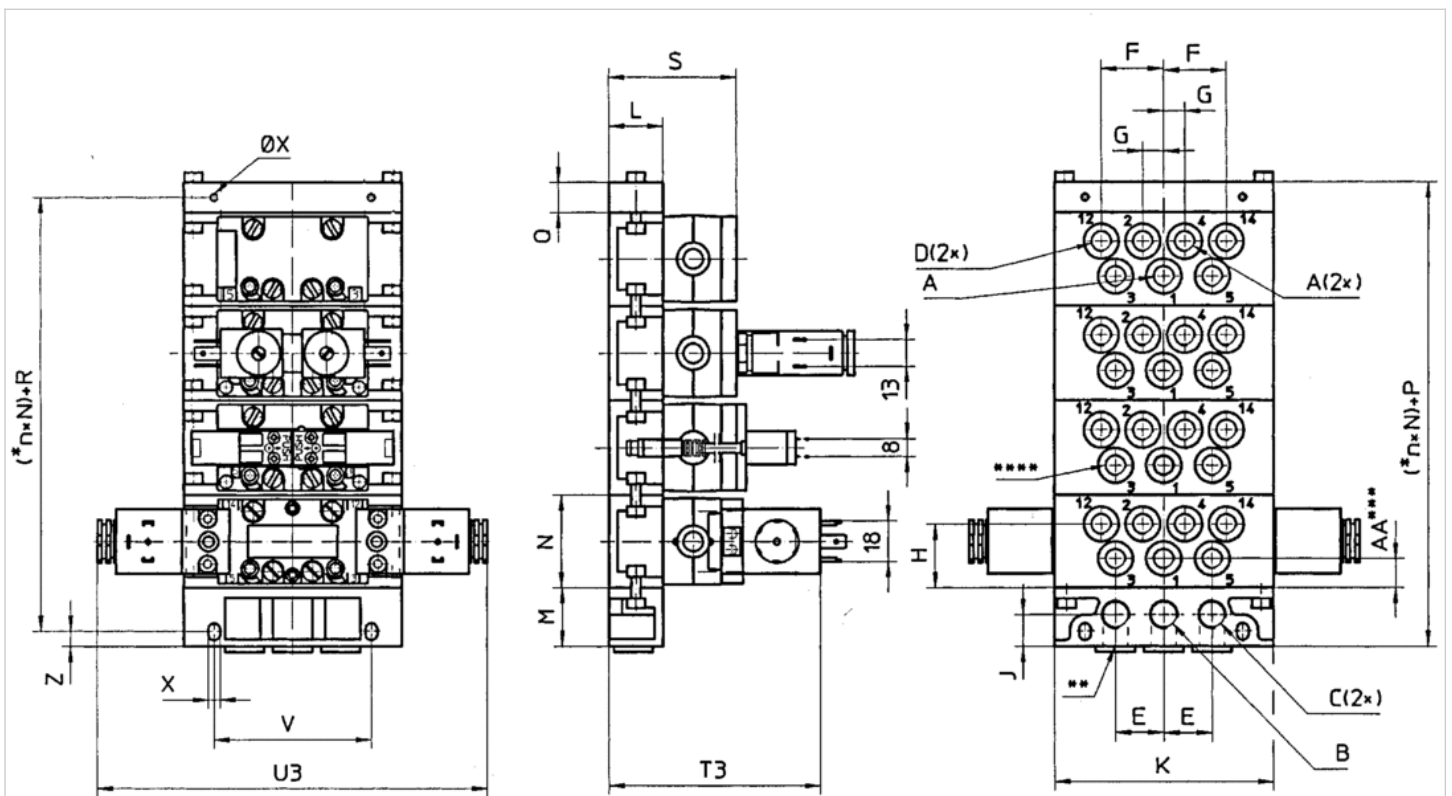
Dimensions

A	G 1/4
B	G 3/8
B1	G 1/4
C	5.5
D	11
E	71

A	G 1/4
F	32
G	22
H	92
J	24
R	17
K	12
M	12
N	36
O	22
P	43
S	106
T2	124
U2	70

Dimensions

30 mm CNOMO pilot valve width all ports on bottom



Base plate ISO 5599-1

* n = number of subbases. ** Alternative port openings, closed with plugs. *** Only on subbases with separate intake. **** Subbase 5801680000 can also be connected to port 3 and 5.

An example configuration is illustrated. The delivered product may thus deviate from the illustration.

Dimensions

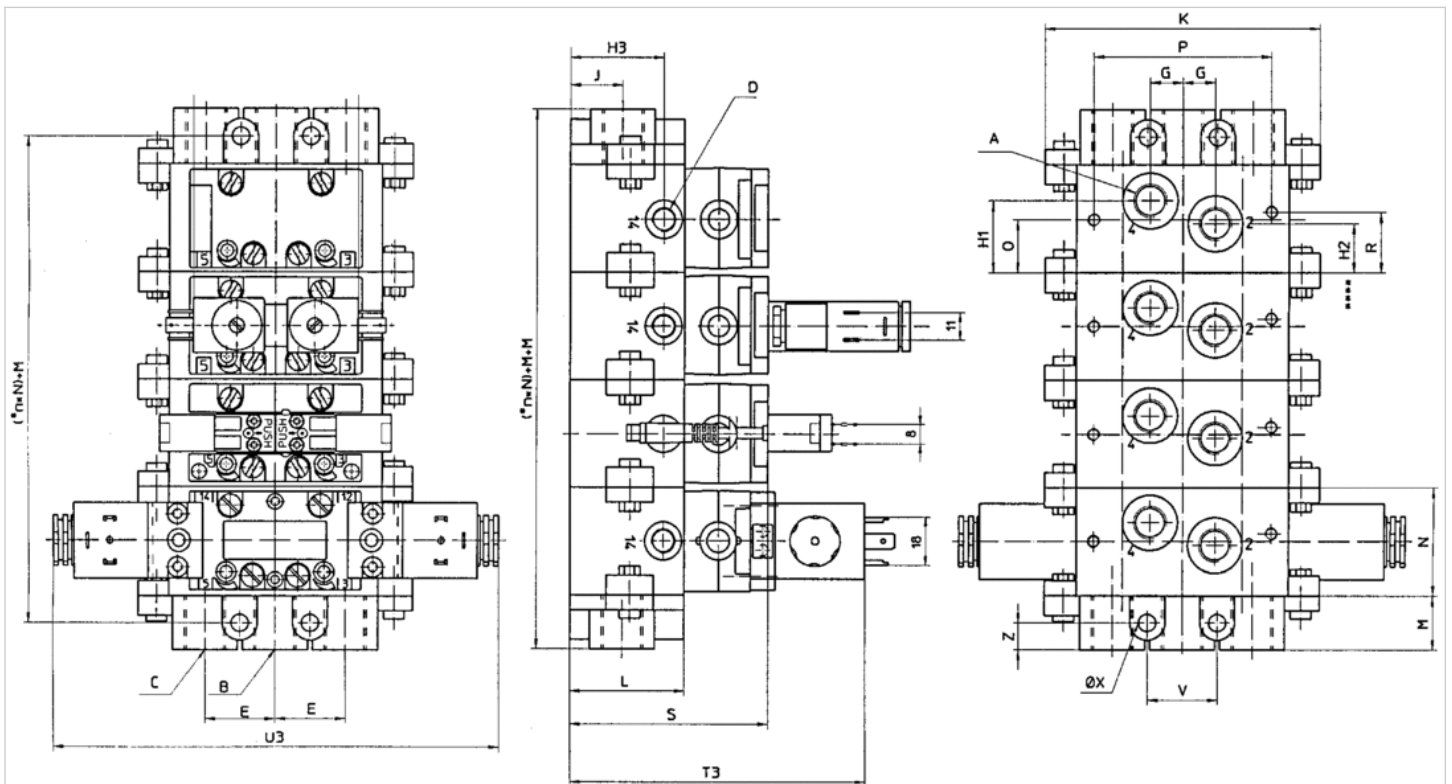
A	G 1/8	G 1/4	$\varnothing 6$	$\varnothing 8$
B	G 1/4	G 3/8	G 1/4	G 3/8
C	G 1/4	G 3/8	G 1/4	G 3/8

A	G 1/8	G 1/4	Ø 6	Ø 8
D	G 1/8	G 1/8	Ø 4	Ø 6
E	22	27	22	27
F	28.5	40	28.5	40
G	9.5	12.5	9.5	12.5
H	29.5	26.5	29.5	26.5
J	14.5	20	14.5	20
K	100	122	100	122
L	25	30	25	30
M	27	34	27	34
N	43	43	43	43
P (=M+Q)	41	49	41	49
Q	14	15	14	15
R (=Q/2+M-Z)	27.5	34	27.5	34
S	60	64	60	64
V	72	94	72	94
X	5.4	6.4	5.4	6.4
Z	7	8	7	8
AA	8	10	-	-
T3	100	101	100	101
U3	174	174	174	174

A = ports 2 and 4 in the intermediate plate ← B = port 1 in the supply plate ← C = ports 3 and 5 in the supply plate ← D = ports 12 and 14 in the intermediate plate

Dimensions

Dimensions ports 2 and 4 on bottom Ports 12 and 14 on side



* n = Number of subbases

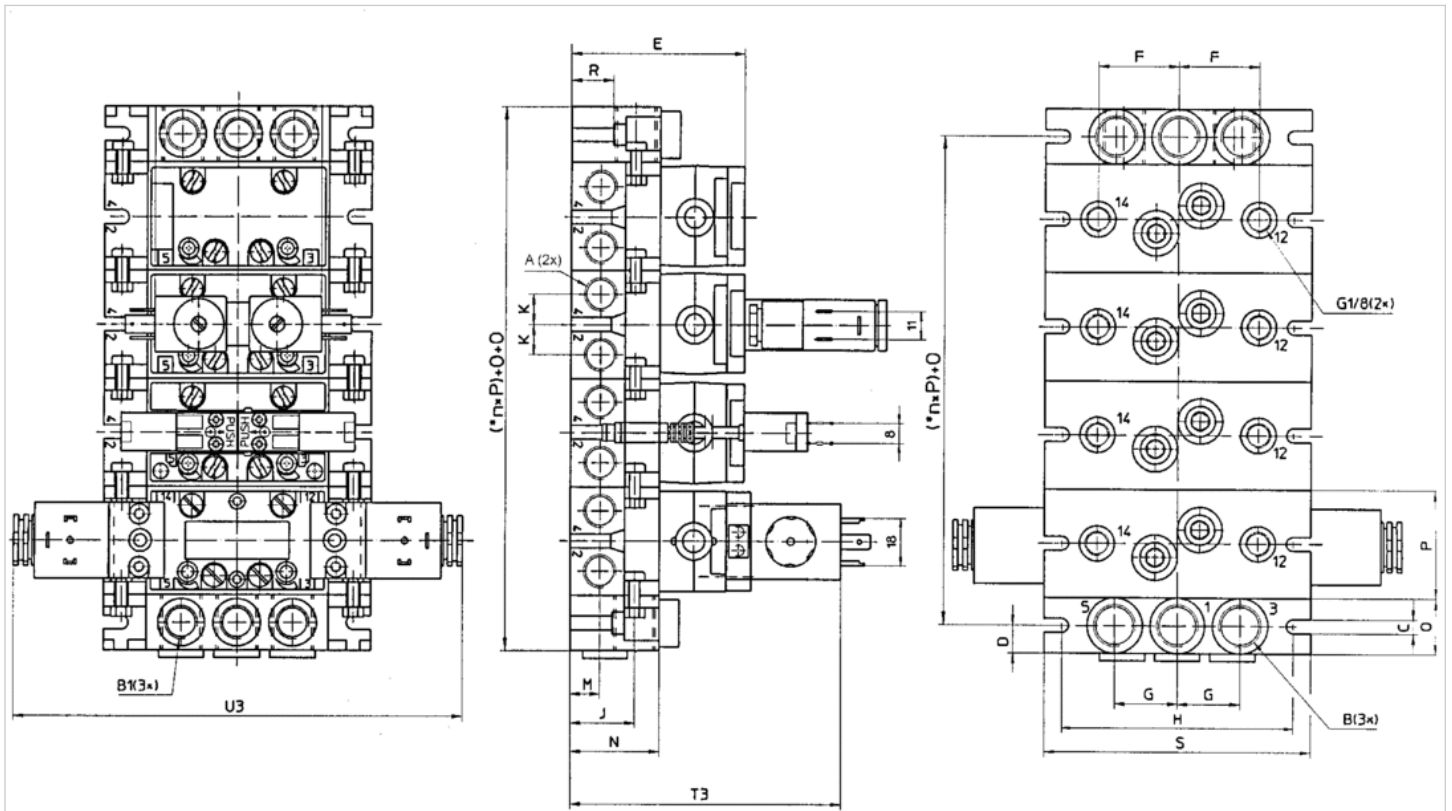
An example configuration is illustrated. The delivered product may thus deviate from the illustration.

Dimensions

A	G 1/4
B	G 3/8
C	G 3/8
D	G 1/8
E	28
G	13
H1	29
H2	20
H3	39.5
J	22
K	110
L	46
M	22
N	43
P	71
Q	21.5
R	24.5
S	81
V	28
X	7
Z	11
T3	121
U3	174

Dimensions

Dimensions ports 2 and 4 on side ports 12 and 14 on bottom



* n = Number of subbases

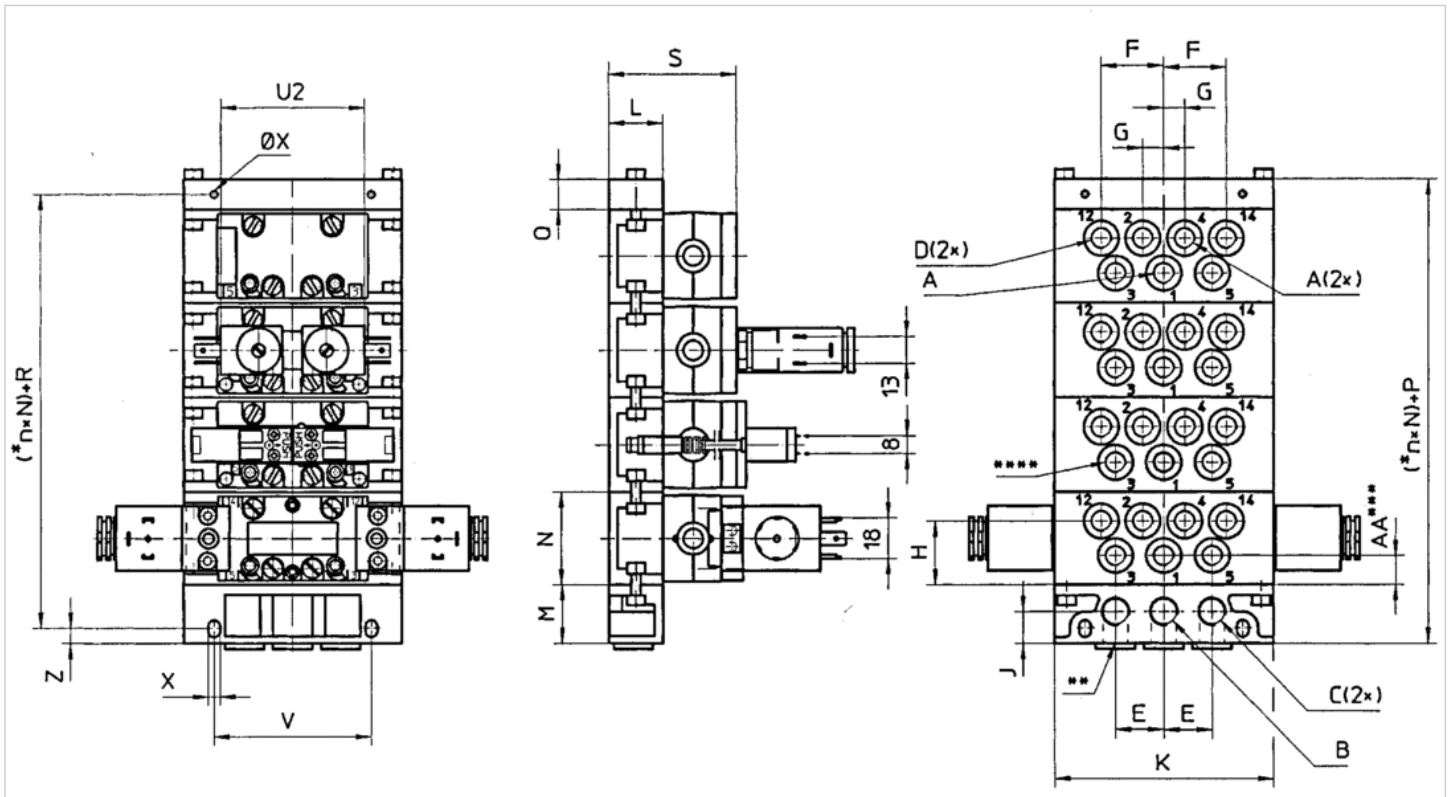
An example configuration is illustrated. The delivered product may thus deviate from the illustration.

Dimensions

A	G 1/4
B	G 3/8
B1	G 1/4
C	5.5
D	11
E	71
F	32
G	22
H	92
J	24
R	17
K	12
M	12
N	36
O	22
P	43
S	106
T3	111
U3	174

Dimensions

Pneumatically operated all ports on bottom



* n = number of subbases. ** Alternative port openings, closed with plugs. *** Only on subbases with separate intake. **** Subbase 5801680000 can also be connected to port 3 and 5.

An example configuration is illustrated. The delivered product may thus deviate from the illustration.

Dimensions

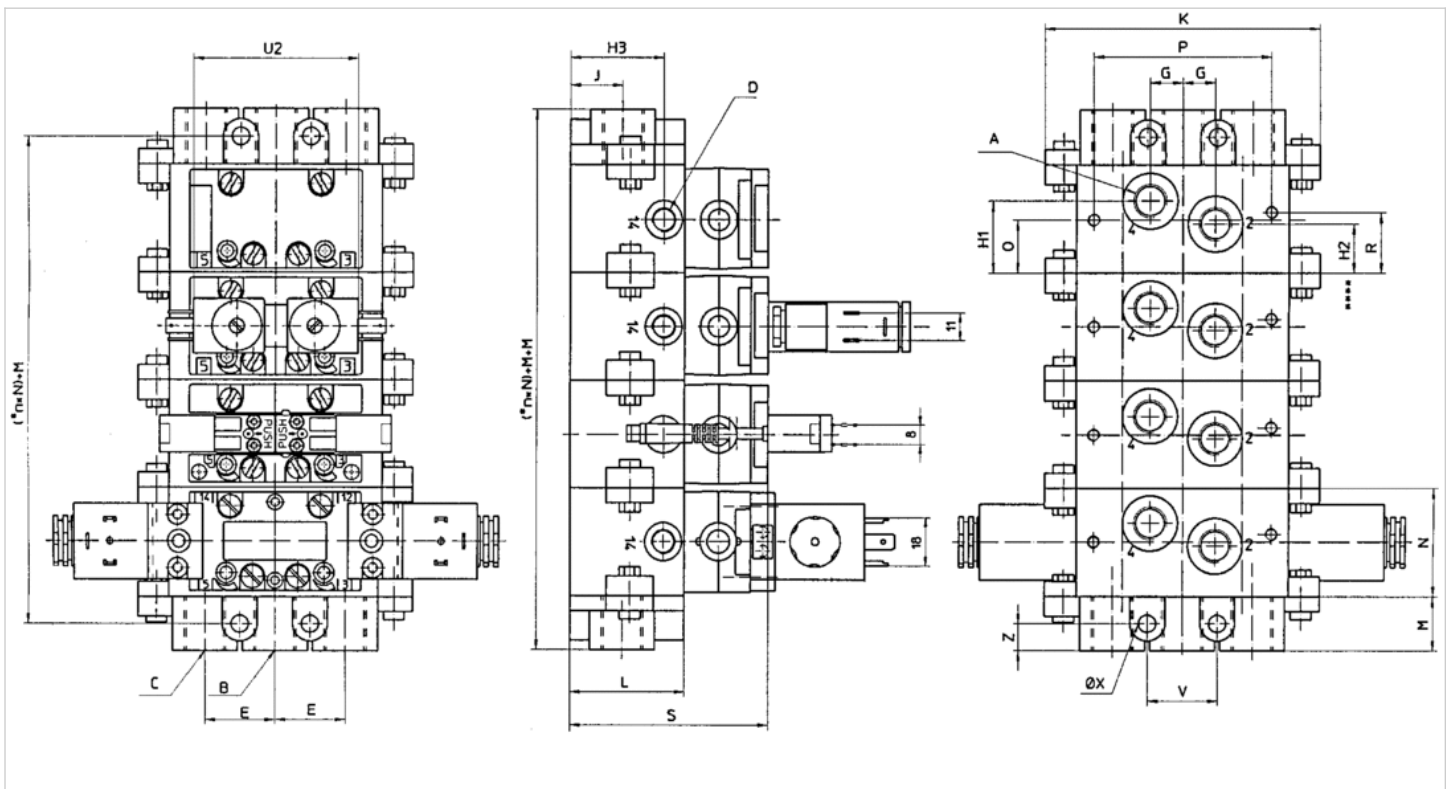
	G 1/8	G 1/4	Ø 6	Ø 8
A	G 1/8	G 1/4	Ø 6	Ø 8
B	G 1/4	G 3/8	G 1/4	G 3/8
C	G 1/4	G 3/8	G 1/4	G 3/8
D	G 1/8	G 1/8	Ø 4	Ø 6
E	22	27	22	27
F	28.5	40	28.5	40
G	9.5	12.5	9.5	12.5
H	29.5	26.5	29.5	26.5
J	14.5	20	14.5	20
K	100	122	100	122
L	25	30	25	30
M	27	34	27	34
N	43	43	43	43
P (=M+Q)	41	49	41	49
Q	14	15	14	15
R (=Q/2+M-Z)	27.5	34	27.5	34
S	60	65	60	65
V	72	94	72	94
X	5.4	6.4	5.4	6.4

A	G 1/8	G 1/4	Ø 6	Ø 8
Z	7	8	7	8
AA	8	10	-	-
U2	70	70	70	70

A = ports 2 and 4 in the intermediate plate ↔ B = port 1 in the supply plate ↔ C = ports 3 and 5 in the supply plate ↔ D = ports 12 and 14 in the intermediate plate

Dimensions

Dimensions ports 2 and 4 on bottom Ports 12 and 14 on side



* n = Number of subbases

An example configuration is illustrated. The delivered product may thus deviate from the illustration.

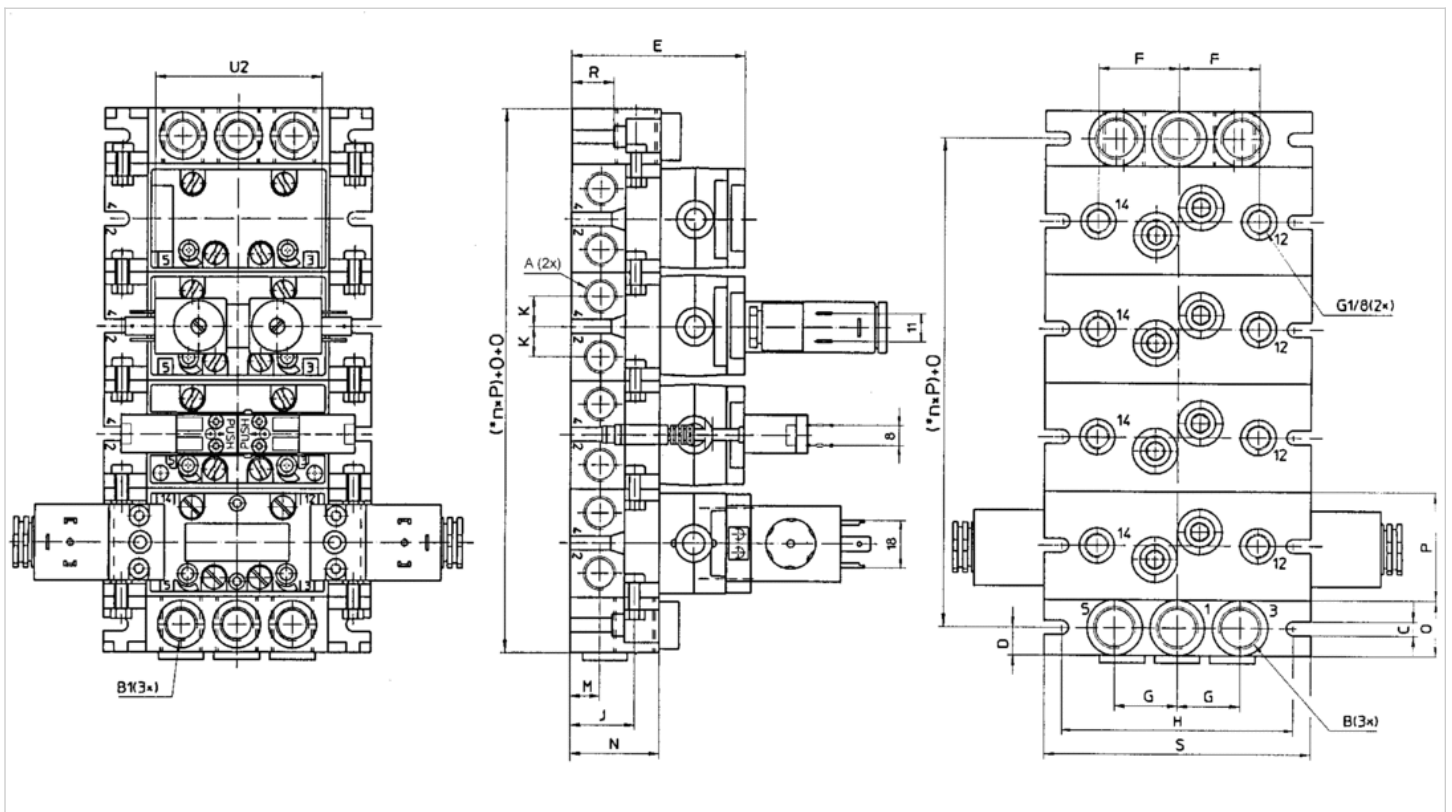
Dimensions

A	G 1/4
B	G 3/8
C	G 3/8
D	G 1/8
E	28
G	13
H1	29
H2	20
H3	39.5
J	22
K	110
L	46
M	22

A	G 1/4
N	43
P	71
Q	21.5
R	24.5
S	81
V	28
X	7
Z	11
U2	70

Dimensions

Dimensions ports 2 and 4 on side ports 12 and 14 on bottom



* n = Number of subbases

An example configuration is illustrated. The delivered product may thus deviate from the illustration.

Dimensions

A	G 1/4
B	G 3/8
B1	G 1/4
C	5.5
D	11
E	71
F	32
G	22

A	G 1/4
H	92
J	24
R	17
K	12
M	12
N	36
O	22
P	43
S	106
U2	70