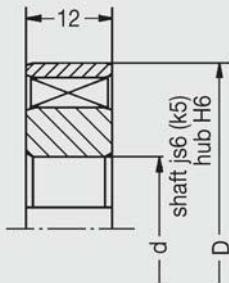


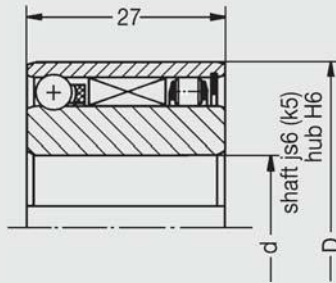
FRN 400\*

FN 400

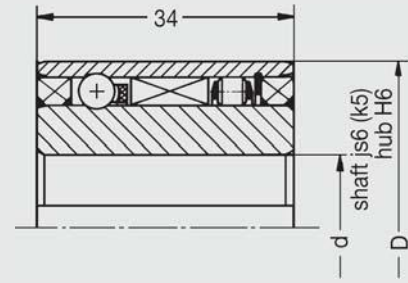
FND 400



without bearing support



with bearing



with bearing and double seal

Dimensions [mm] [inch]		FRN 400+	FN 400	FND400♦	Torque M		Idling speed clutch n <sub>max</sub> [RPM]	Load Capacities [N] [lb]			
d	D	Part number			[ftlb]	[Nm]		C dynamic		C <sub>0</sub> static	
							Ball	Roller	Ball	Roller	
10 .3937	31 1.2205	FRN 427			59	80	4 400				
		FRN 427 Z			49	66					
12 .4724	36 1.4173	FRN 432			86	116	3 700				
		FRN 432 Z			71	97					
15 .5906	41 1.6142	FRN 437	FN 437	FND 437	117	158	3 200	7 325	7 400	3 870	6 920
		FRN 437 Z	FN 437 Z	FND 437 Z	101	137	*(1 700)	1 646	1 663	870	1 555
20 .7874	46 1.8110	FRN 442	FN 442	FND 442	152	207	2 800	7 980	8 410	4 570	8 560
		FRN 442 Z	FN 442 Z	FND 442 Z	131	178	*(1 500)	1 793	1 890	1 027	1 924
25 .9843	58 2.2835	FRN 453	FN 453	FND 453	246	333	2 200	8 690	9 460	5 640	10 860
		FRN 453 Z	FN 453 Z	FND 453 Z	207	281	*(1 200)	1 953	2 126	1 267	2 441
30 1.1811	64 2.5197	FRN 459	FN 459	FND 459	305	414	2 000	8 805	10 560	6 010	13 050
		FRN 459 Z	FN 459 Z	FND 459 Z	263	357	*(1 100)	1 979	2 373	1 351	2 933
35 1.3780	68 2.6772	FRN 463			348	472	1 900				
		FRN 463 Z			300	407					
40 1.5748	75 2.9528	FRN 470	FN 470	FND 470	429	583	1 700	9 645	11 690	7 405	15 870
		FRN 470 Z	FN 470 Z	FND 470 Z	370	502	*(1 000)	2 168	2 627	1 664	3 566
45 1.7717	78 3.0709	FRN 473			467	633	1 600				
		FRN 473 Z			402	545					

The load capacities "C" and "C<sub>0</sub>" are not valid for the FRN 400 series!

Maximum radial clearance for the FRN 400 series pending application 0.02 mm.

+ Torque capacity stated is valid for the clutch but not for the keyway!

Keyway specifications according to DIN 6885 Bl. 1 (P9) with back clearance (connecting dimensions on page 20).

♦ Arrow on inner ring shows: idling direction of outer ring = locking direction of inner ring

\* Idling speed for series FND

Other sizes on request.  
Dimensions subject to change.  
10 Nm ≈ 1 kpm; 10 N ≈ 1 kp