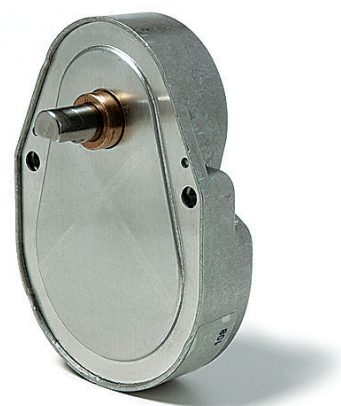


# UGF

## UGF

Dimensions (mm)	58 x 81
Height (mm)	17
Max. torque (cNm)	500
Ratios	4 <sup>1/6</sup> ... 5000
Internal slipping clutch	none
Standard shaft (mm)	∅ 8 x 12
Weight (g)	130
Motor combination	Series UC, UB, UD, UF



## Standard Data

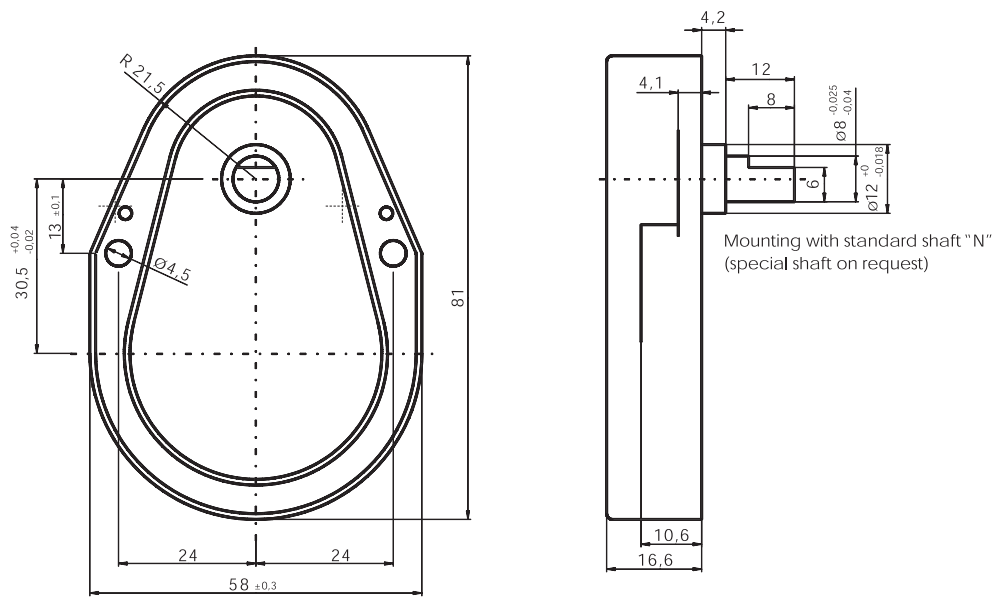
Mounting	any position
Axial thrust F <sub>A</sub>	100 N
Lateral force F <sub>R</sub>	400 N
Slipping clutches/free wheel	none
Slipping-/free wheel torque	cNm
Output shafts	∅ 8 x 12, other on request
Climatic class	wide-spread according to DIN IEC 60721-2-1
Ambient temperature operation	°C -15 ... +55
Ambient temperature storage	°C -40 ... +80

Ratios	4 <sup>1/6</sup>	8 <sup>1/3</sup>	16 <sup>2/3</sup>	20 <sup>5/6</sup>	25	30	41 <sup>2/3</sup>	50	62 <sup>1/2</sup>	83 <sup>1/3</sup>	100	125	166 <sup>2/3</sup>
	250	333 <sup>1/3</sup>	500	600	750	1000	1200	1500	4000	5000			

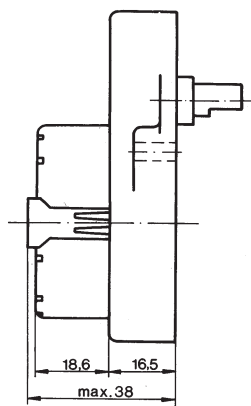
## Order Reference

Type	Gearbox	UGF	100	N	N
Ratio	100				
Slipping clutch	N Without slipping clutch				
Shaft end	N ∅ 8 x 12, other on request				

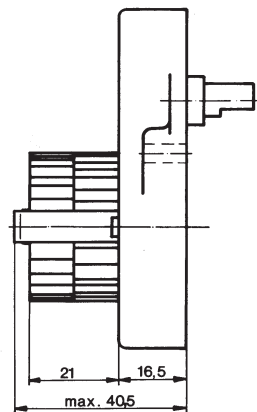
## Dimensions



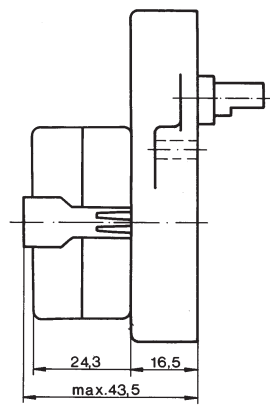
UDS 1..F



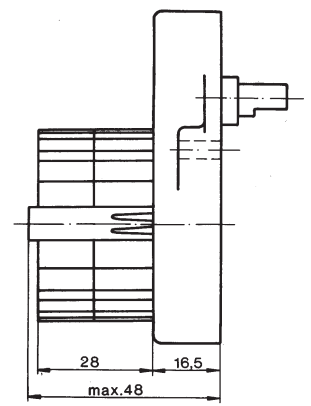
UBR 1/UBR 2..F



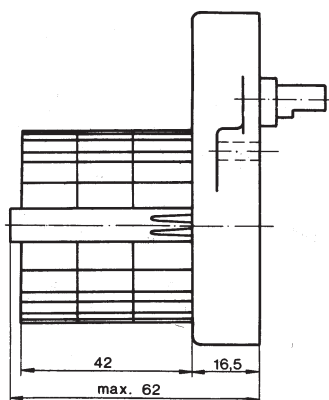
UDR 1..F



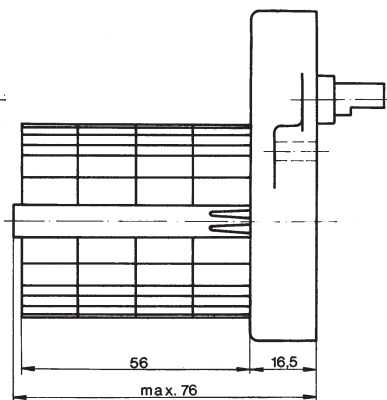
UFM 1/UFU 1/UFR 1..F



UFR 3..F



UFR 4..F



## Torque / ratio / life graph

